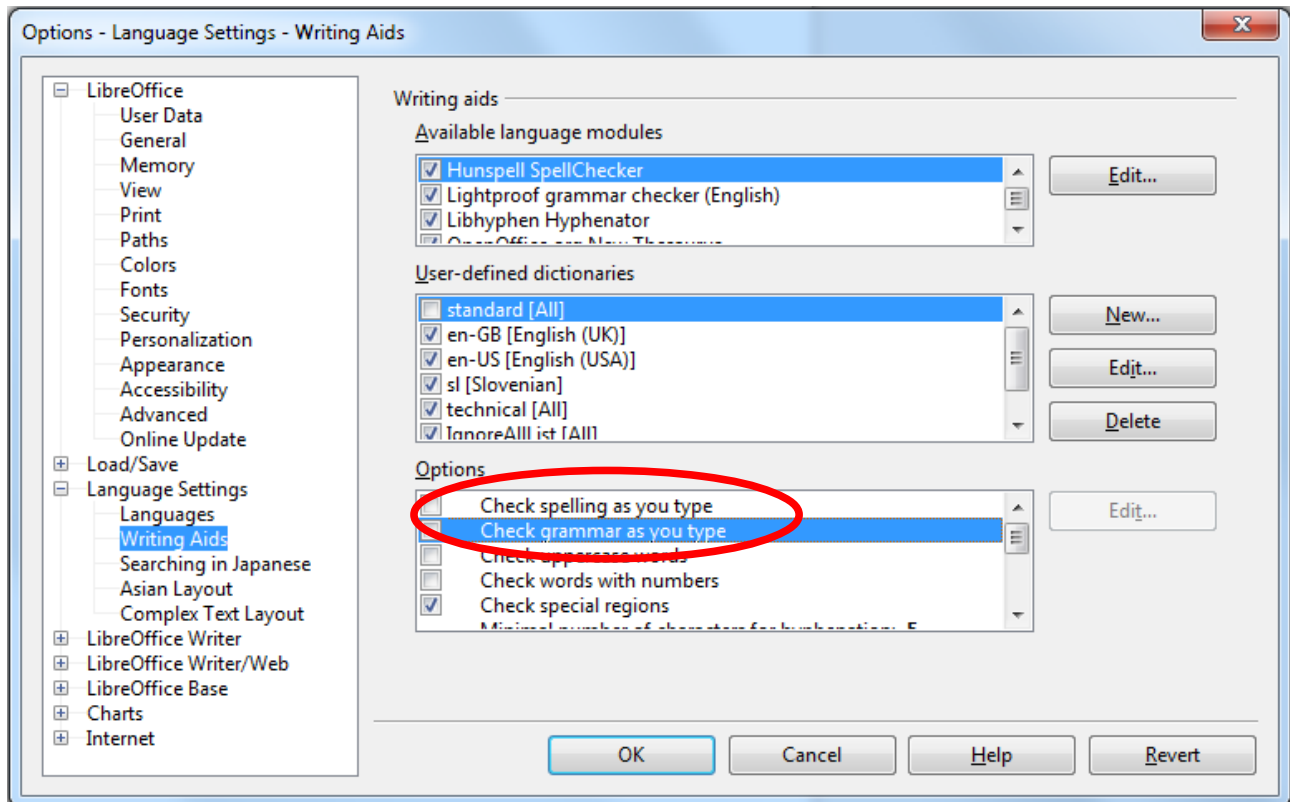
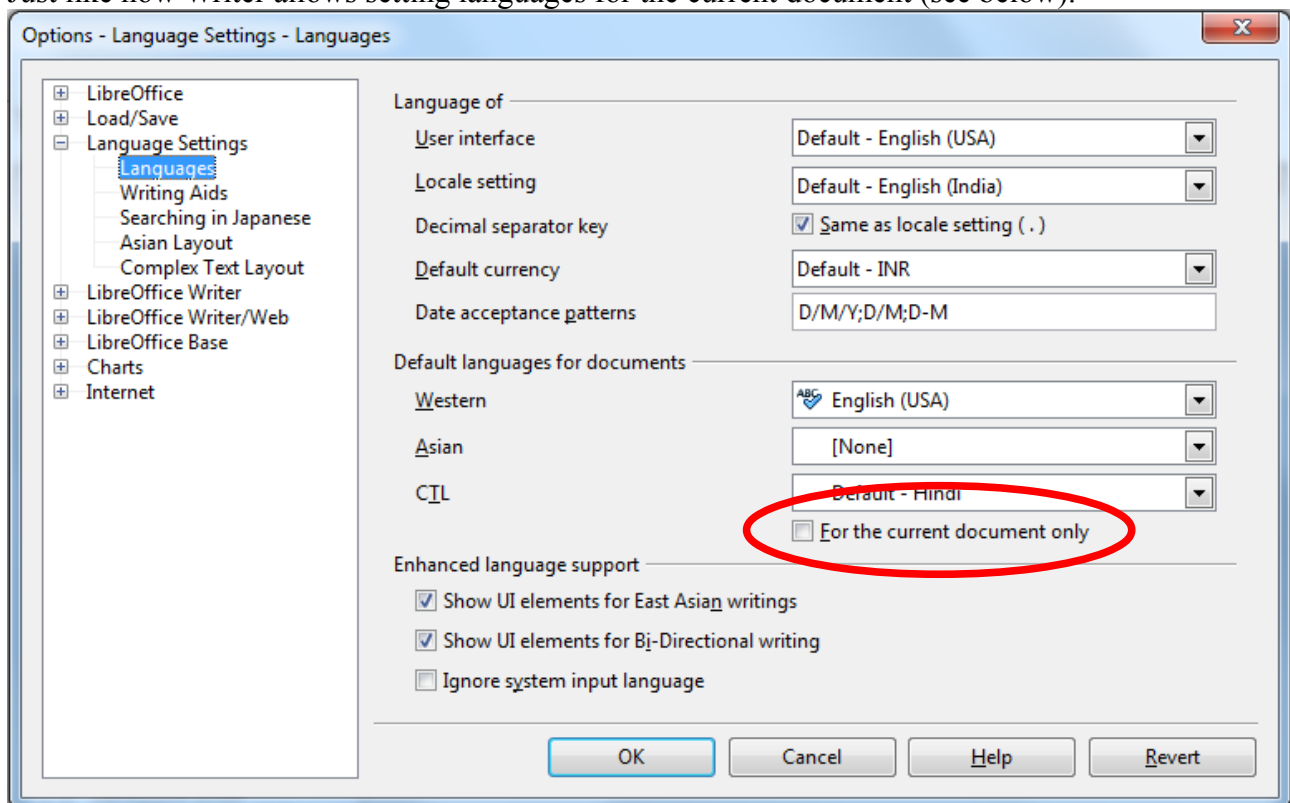


Turning off grammar and spell-check for a specific document:



The auto spellchecker and auto-grammar settings should be settable for specific document.

Just like how Writer allows setting languages for the current document (see below).



This would be very useful when the document has transliterated text (typed in English but in pronounced in some other language), such as “*namaste!*” (a greeting in India): it would prevent auto-capitalization and spelling-correction of such text.