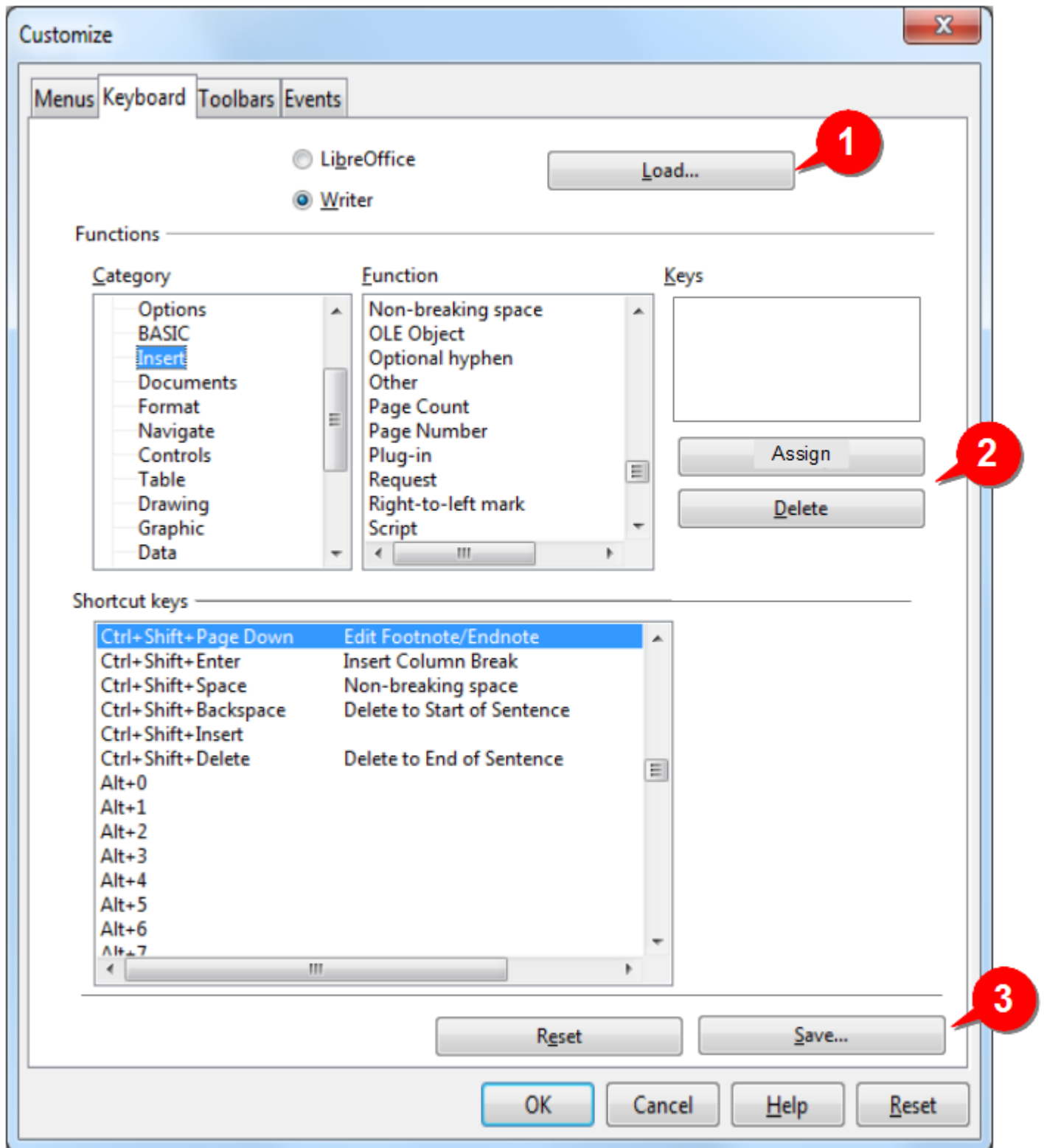


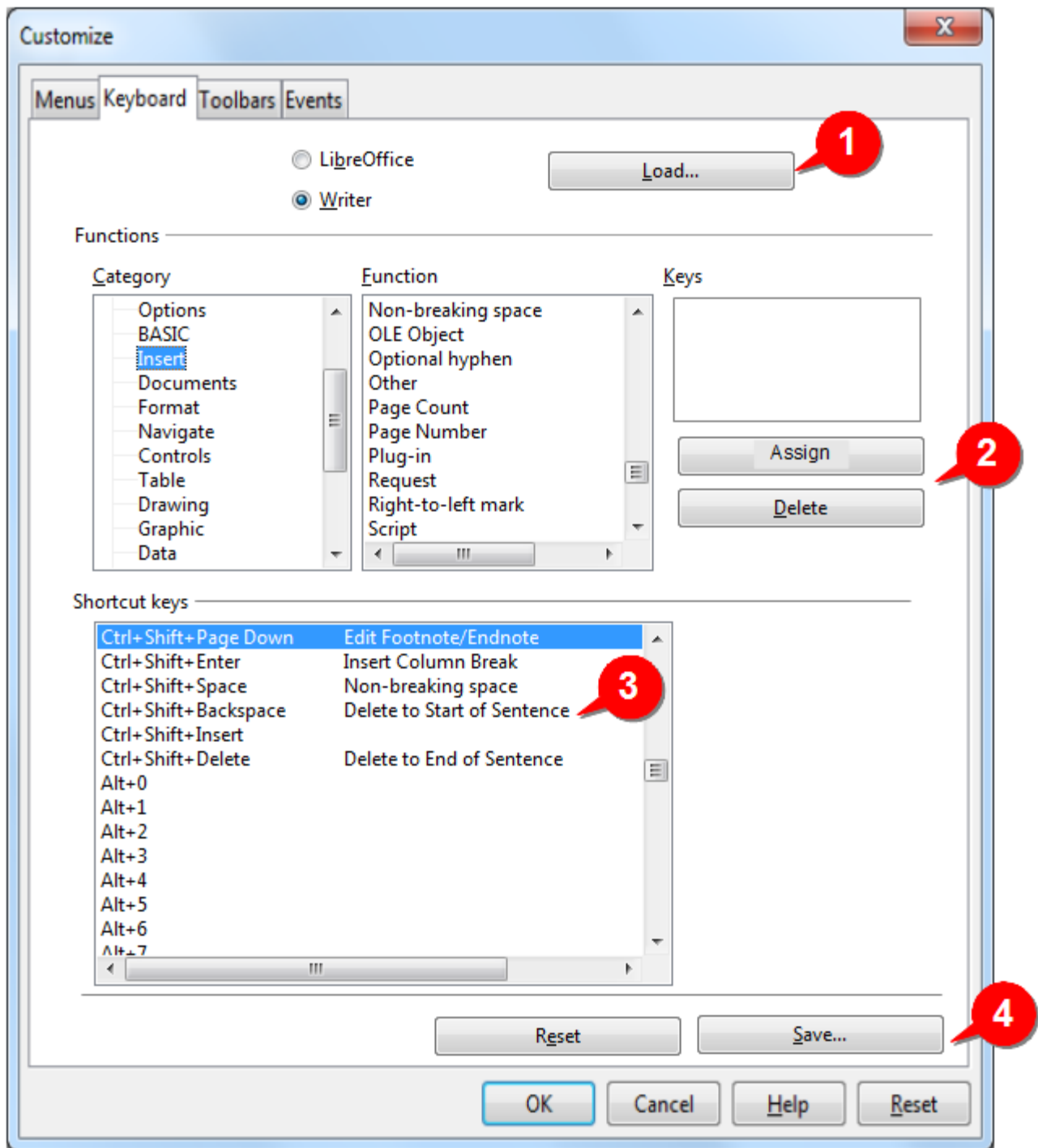
Why the changes



The numbers in the following discussion refer to the markers in the figure.

1. Only the **Load** key is retained here. The other keys are relevant at the *end* of the workflow, so shifted to the bottom of the screen (also see **3** below).
2. The **Assign** and **Delete** buttons are related to the shortcuts, so moved closer to the **Keys** box. The **Keys** box is also made shorter to display 4 shortcuts (no one would assign so many shortcuts!).
3. The **Reset** and **Save** buttons refer to the schema. Since this is the last action in the workflow, these buttons are shifted to the bottom.

How the proposed layout would work



The workflow is as follows:

1. The user selects either **LibreOffice** or **Writer**.
Optionally, he loads an existing schema by clicking on the **Load** button.
2. The user selects a category and then selects a function within that category.
If the function has any shortcut(s) assigned to it, they will appear in the **Keys** box.

The user has two options:

- (a) He clicks inside the **Keys** box, and presses a shortcut. This shortcut appears in the **Keys** box.
To save this new shortcut, the user has to click the **Assign** button. (Otherwise the shortcut will not be assigned to the function.)

If the shortcut is already assigned to another function, LibreOffice will pop up a conflict warning, and allow the user to abort the assignment, or go ahead with it. In the latter case, the shortcut will be re-assigned from another function to the currently selected function.

- (b) The user selects an existing shortcut and presses **Delete** button. This removes the assigned shortcut.
- 3. The list at the bottom is for indication only (it plays no part in assignment process).
As soon as the user assigns a new shortcut (or removes an existing shortcut), this list is updated.
The user can check this list to find unassigned shortcuts.
- 4. Finally, the user has the choice to reset the assignments in the current session (**Reset** button).
He can also save the edited schema by clicking on the **Save** button.

Thus the workflow is strictly from top to bottom of the GUI, and does not force the user's focus in unexpected directions.