

Manjaro Linux

Manjaro Linux 23.1.3 (Vulcan) / LibreOffice 24.2.0.3 (X86_64)

Version: 24.2.0.3 (X86_64) / LibreOffice Community

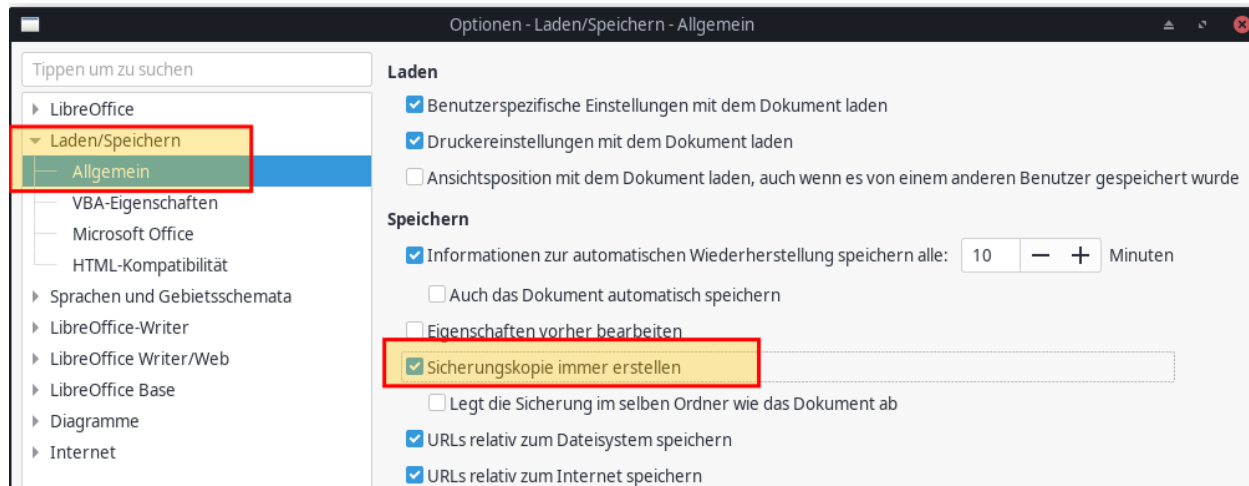
Build ID: 420(Build:3)

CPU threads: 8; OS: Linux 6.7; UI render: default; VCL: gtk3

Locale: de-DE (de_DE.utf8); UI: de-DE

24.2.0-2

Calc: CL threaded



insgesamt 24

```
-rw-r--r-- 1 username users 9603 30. Mär 09:54 TestdokumentLOCAL_EXT4.odt.bak
-rw-r--r-- 1 username users 9521 30. Mär 09:55 TestdokumentNFS.odt.bak
-rwxr-xr-x 1 username users    0 30. Mär 09:52 TestdokumentSMB.odt.bak
```

LibreOffice 24.2.0.3 (X86_64) is the current version from official repository of this diwtribution

Paketname

Libreoffice-fresh 24.2.0-2

samba 4.19.5-1

cifs-utils 7.0-3

6.7.7-1-MANJARO

Version

LibreOffice 24.2.0.3 420(Build:3)

Version 4.19.5

mount.cifs version: 7.0

Arch Linux

Arch Linux / LibreOffice 24.2.1.2 (X86_64)

Before Update

Version: 24.2.1.2 (X86_64) / LibreOffice Community

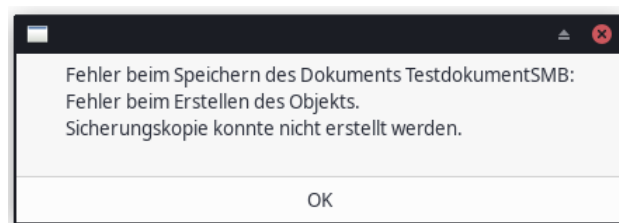
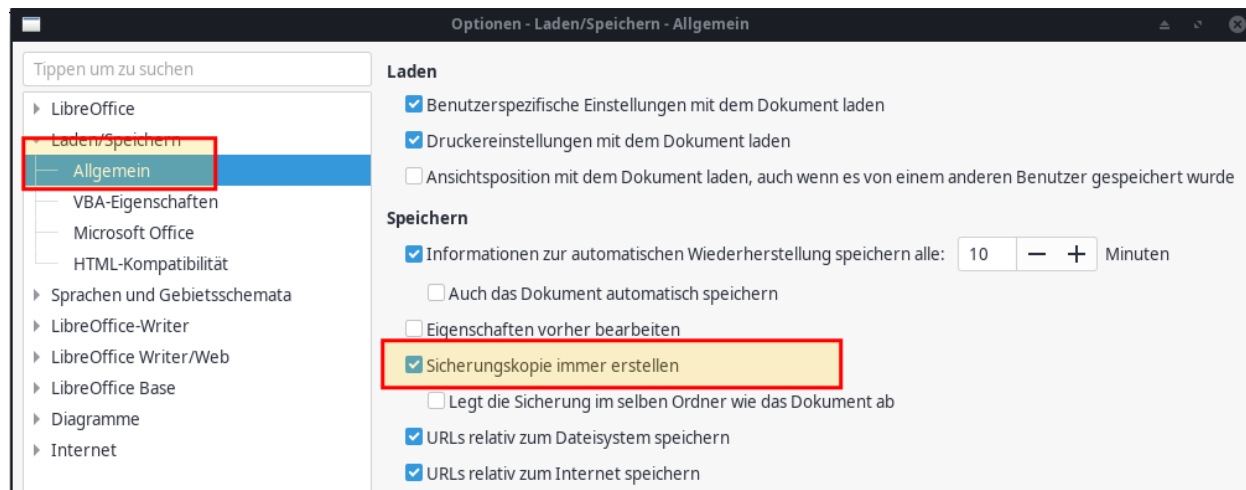
Build ID: 420(Build:2)

CPU threads: 2; OS: Linux 6.8; UI render: default; VCL: gtk3

Locale: de-DE (de_DE.utf8); UI: de-DE

24.2.1-5

Calc: threaded



insgesamt 0

```
-rwxr-xr-x 1 username users 0 10. Mär 14:53 testdokument.odt.bak
```

```
-rwxr-xr-x 1 username users 0 30. Mär 10:53 TestdokumentSmbArch.odt.bak
```

→ The error is still there.

Arch Linux / LibreOffice 24.2.2.2 (X86_64)

After Update

Version: 24.2.2.2 (X86_64) / LibreOffice Community

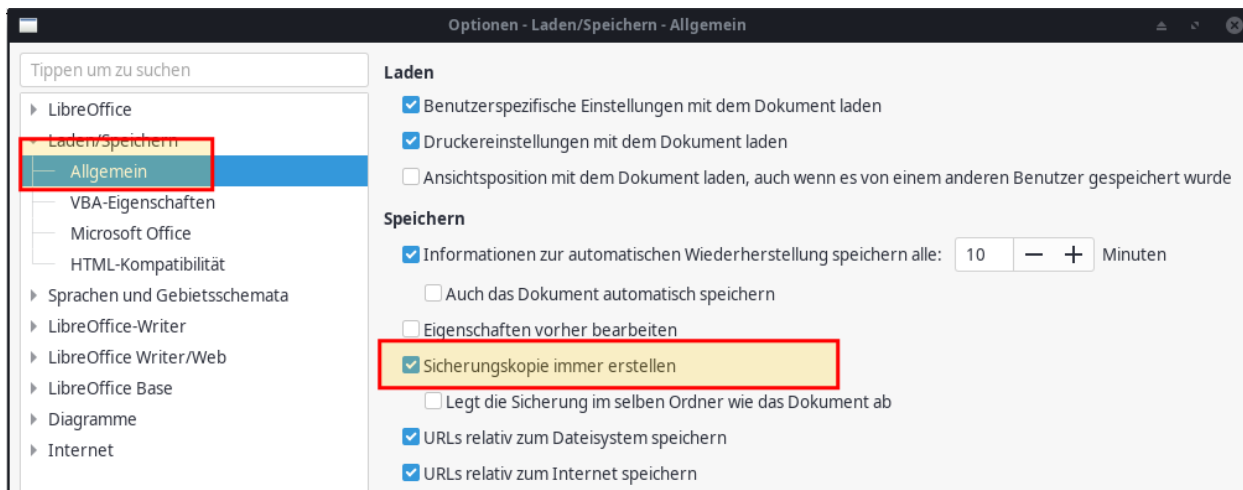
Build ID: 420(Build:2)

CPU threads: 2; OS: Linux 6.8; UI render: default; VCL: gtk3

Locale: de-DE (de_DE.utf8); UI: de-DE

24.2.2-1

Calc: threaded



insgesamt 24

```
-rwxr-xr-x 1 username users 8361 30. Mär 11:06 testdokument.odt.bak
-rwxr-xr-x 1 username users 9623 30. Mär 11:05 TestdokumentSmbArch.odt.bak
```

Paketname

libreoffice-fresh 24.2.2-1

samba 4.20.0-1

cifs-utils 7.0-3

6.8.2-arch2-1

Version

LibreOffice 24.2.2.2 420(Build:2)

Version 4.20.0

mount.cifs version: 7.0

→ The error is no longer there.

Kali Linux 2024.1 / LibreOffice 24.2.0.3 (X86_64)

Version: 24.2.0.3 (X86_64) / LibreOffice Community

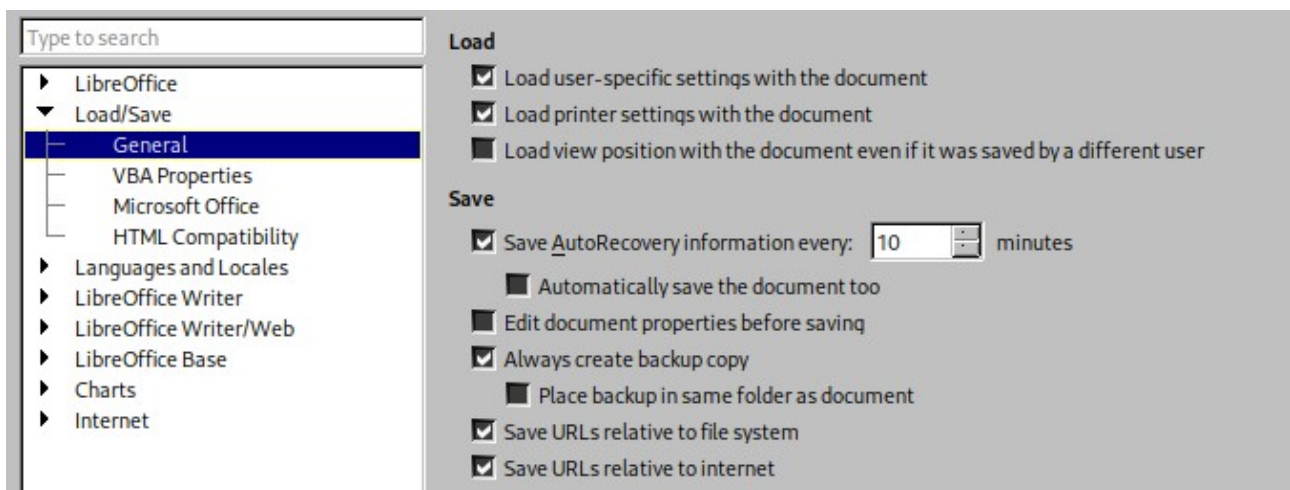
Build ID: 420(Build:3)

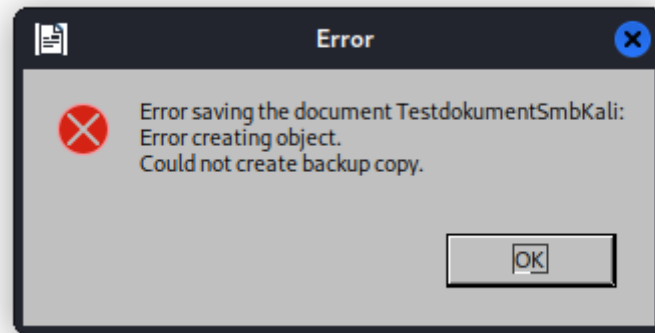
CPU threads: 2; OS: Linux 6.6; UI render: default; VCL: x11

Locale: de-DE (de_DE.UTF-8); UI: en-US

Debian package version: 4:24.2.0-1

Calc: threaded





Paketname	Version
libreoffice/kali-rolling,now 4:24.2.0-1 amd64	LibreOffice 24.2.0.3 420(Build:3)
samba/kali-rolling,now 2:4.19.5+dfsg-1 amd64	Version 4.19.5-Debian
cifs-utils/kali-rolling,now 2:7.0-2 amd64	mount.cifs version: 7.0
6.6.9-amd64 / 6.6.9-1kali1	

```
insgesamt 0
-rwxr-xr-x 1 username users 0 30. Mär 11:36 TestdokumentSmbKali.odt.bak
```

→ The error is still there.