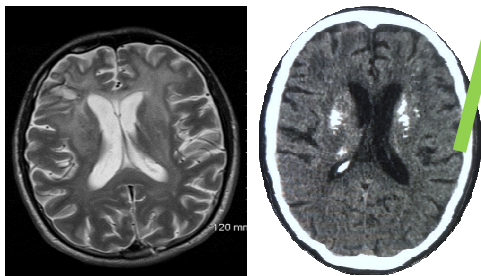


Admitted to regional hospital with progressive severe cognitive impairment (FAB 20), 20Kg weight loss and incontinence. Diagnosed with HIV.



No prior personal or familial medical history.



Truvada, Darunavir and ritonavir commenced

Truvada switched to Kivexa



Transferred to tertiary hospital for specialist input.  
CD4: 6 cells/mm<sup>3</sup>  
HIV viral load: 1,700,000 copies/mL  
Opportunistic infections out ruled.  
Fahr's-type calcification noted on CT.  
CSF HIV viral load was 85,000 copies/mL  
MOCA 17/30

Hidden ?????

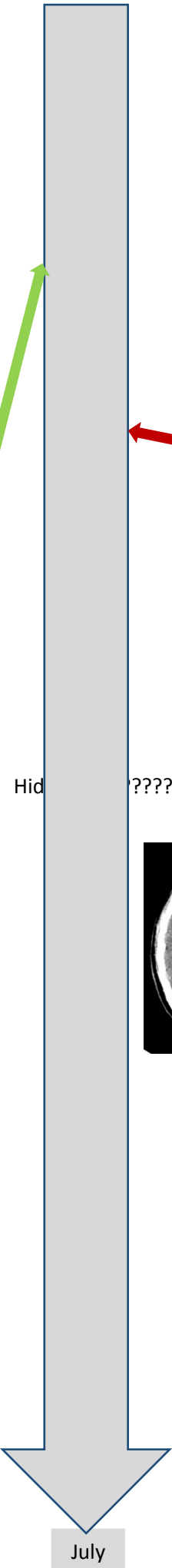
MOCA 26/30



CD4: 298 cells/mm<sup>3</sup>

Transfer to a dedicated neurorehabilitation unit.

Currently at home with his parents, wheelchair bound and aphasic.



July