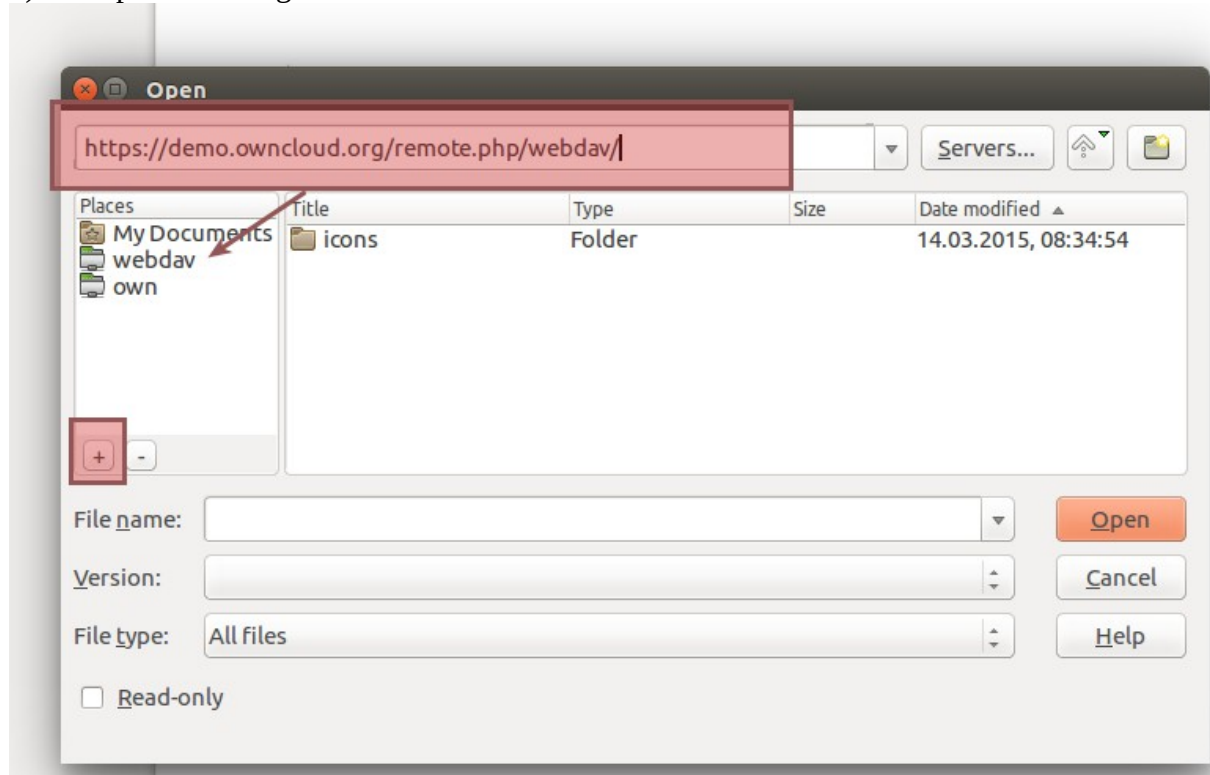


https://bugs.documentfoundation.org/show_bug.cgi?id=81789

Webdav address

<https://demo.owncloud.org/remote.php/webdav/>

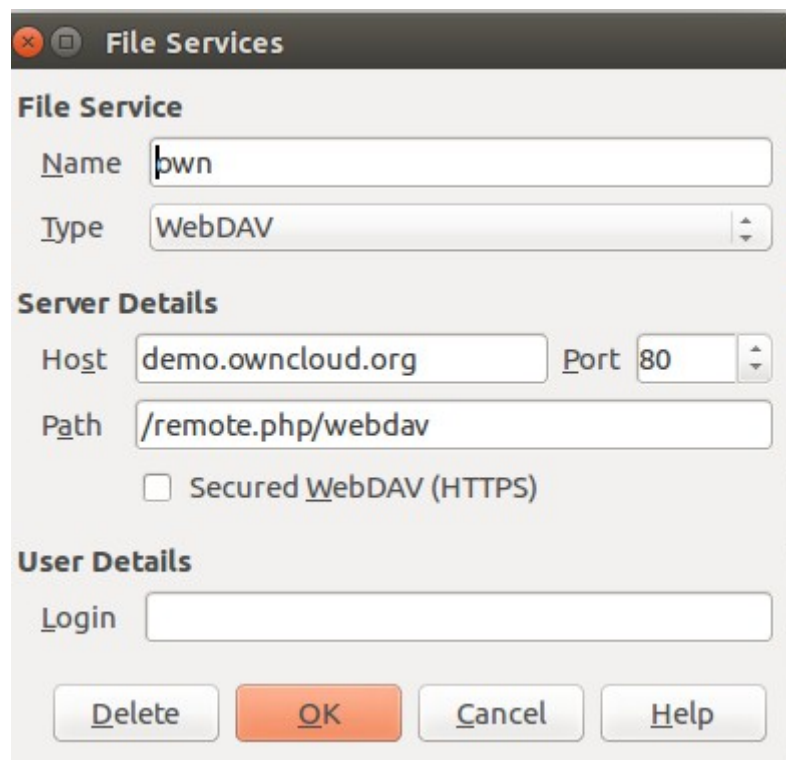
1) enter path to dialog and click +



places entry is created

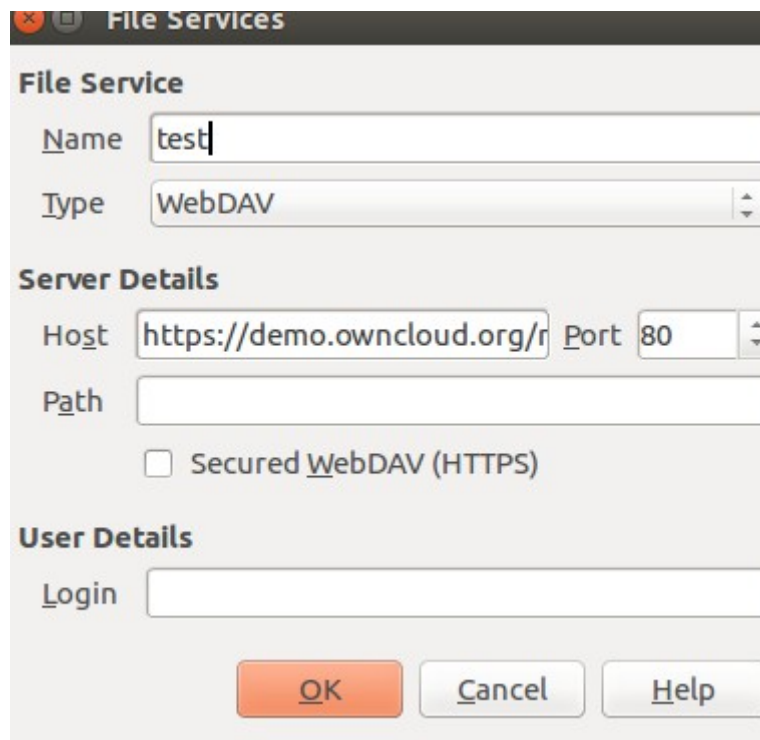
or

2) fill servers properties



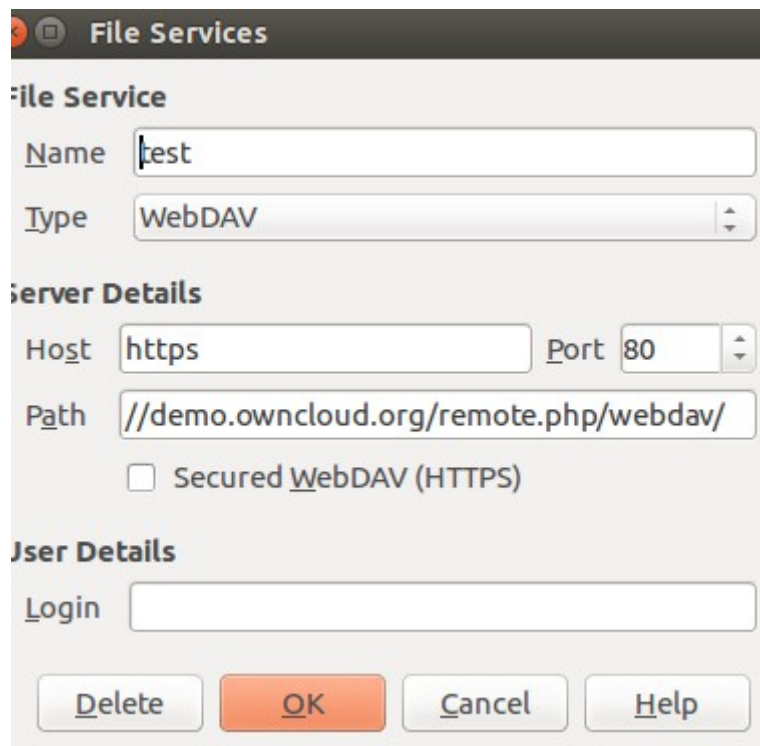
Question - You probably tried following?

full path into the host entry



The screenshot shows the 'File Services' dialog box. Under the 'File Service' section, the 'Name' field contains 'test' and the 'Type' is set to 'WebDAV'. In the 'Server Details' section, the 'Host' field contains 'https://demo.owncloud.org/r', the 'Port' is '80', and the 'Path' field is empty. There is an unchecked checkbox for 'Secured WebDAV (HTTPS)'. The 'User Details' section has an empty 'Login' field. At the bottom are 'OK', 'Cancel', and 'Help' buttons.

After save and reopen LO try to split host and path



The screenshot shows the 'File Services' dialog box after saving and reopening. The 'Name' field still contains 'test' and the 'Type' is 'WebDAV'. In the 'Server Details' section, the 'Host' field now contains 'https' and the 'Path' field contains '//demo.owncloud.org/remote.php/webdav/'. The 'Port' remains '80'. The 'Secured WebDAV (HTTPS)' checkbox is still unchecked. The 'User Details' section has an empty 'Login' field. At the bottom, the buttons are 'Delete', 'OK', 'Cancel', and 'Help'.